

BT820 Modifying VID and PID

Application Note

v1.0

Laird's BT820 USB BT dongle is a dual mode BT v4.0 dongle. Beginning with February 2014, the dongle vendor ID (VID) and product ID (PID) have been changed. This application note describes how to update the VID and PID by modifying keys in the BlueCore Persistent Store. It is intended for customers with the dongles with the old VID and PID.

Requirements

- BT820 USB BT dongle
- Windows PC

Note: Windows 7 is used in this guide. Windows 8 and XP should also be compatible.

- CSR BlueSuite
- CSR USB driver

- Notes:**
1. CSR BlueSuite is made available to customers under a Laird NDA. Customers should contact LT-wirelessinfo@lairdtech.com for the NDA. After BlueSuite is installed, PStools can be found under the CSR folder.
 2. A CSR USB driver is provided along with the CSR BlueSuite.
-

The following sections identify the steps necessary to modify the dongle's VID and PID.

Identifying the Dongle

The new version can be identified by the dongle label. The label reads "BT820-02" as shown below. The old version reads as "BT820". When the "BT820" dongle is inserted to a Windows PC, it is recognized as *TDK Bluetooth USB Adaptor* with VID_04BF and PID_0320 (Figure 1 and Figure 2).



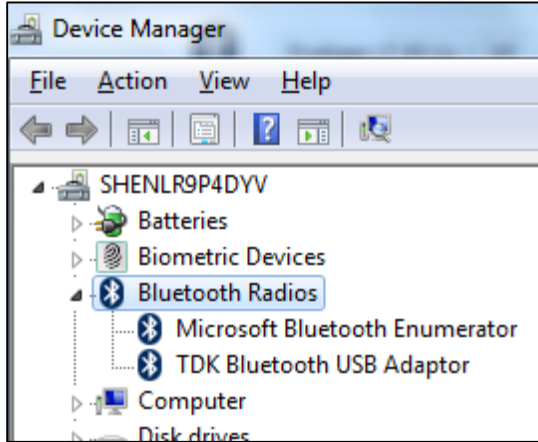


Figure 1: TDK Bluetooth USB Adaptor in the Device Manager

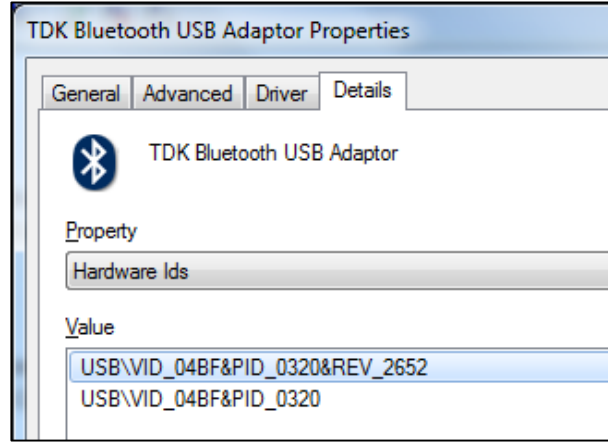


Figure 2: VID and PID displayed in the Adaptor Properties window

Installing Laird USB driver

Complete the following steps to install the Laird USB driver:

1. Right-click **TDK Bluetooth USB Adaptor**, then click **Update Driver Software** from the drop-down menu (Figure 3).

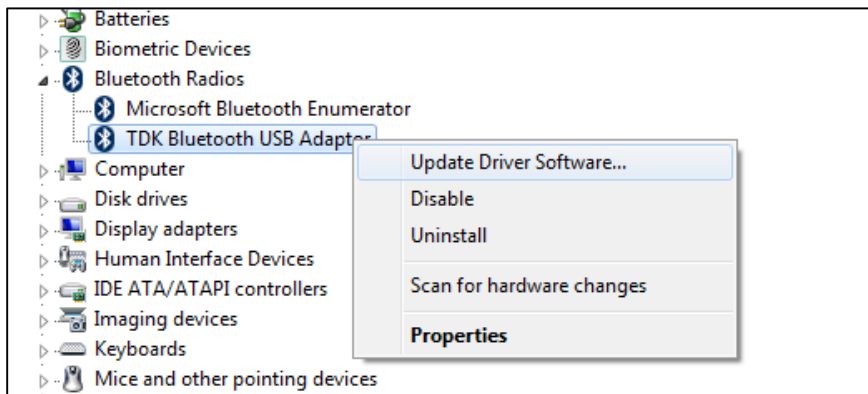


Figure 3: Select Update Driver Software

2. Select the Driver tab and click **Update Driver**.
3. Select **Browse my computer for driver software** (Figure 4).

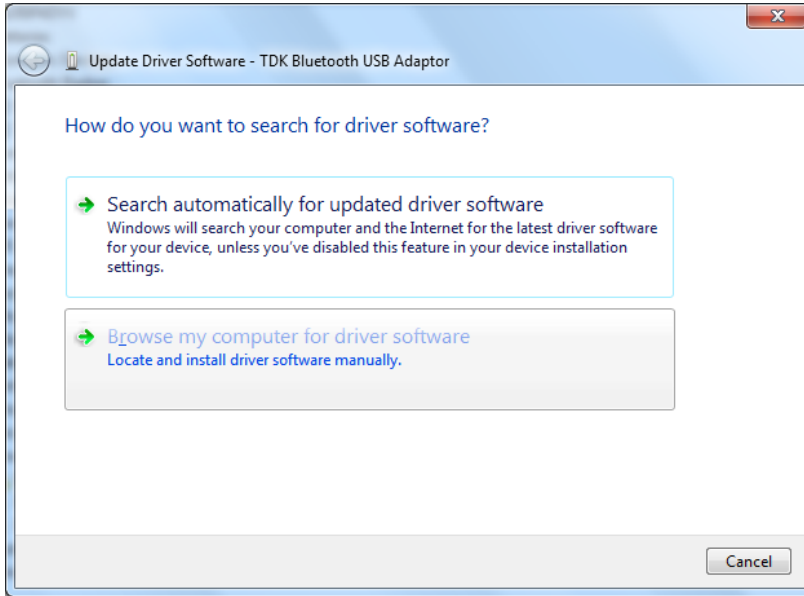


Figure 4: Search for driver software

4. Select **Let me pick from a list of device drivers on my computer.**
5. Select **Have Disk** (Figure 5).

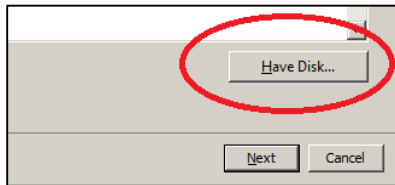


Figure 5: Have Disk button

6. Navigate to where the Laird USB driver is located on your computer and open *LairdBlueCoreUSB.inf*.

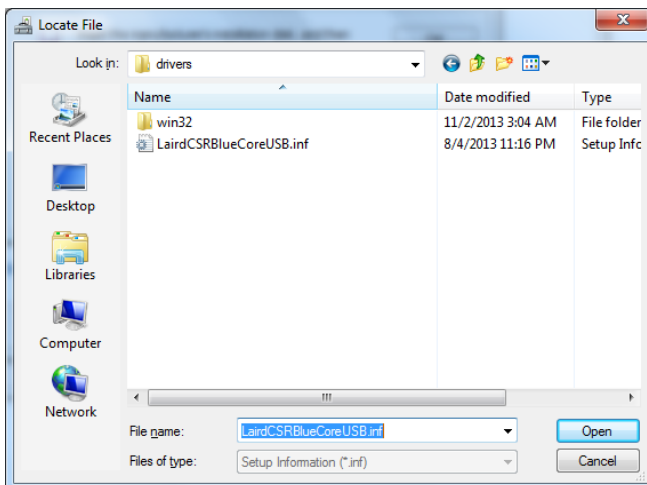


Figure 6: LairdBlueCoreUSB.inf location

7. Proceed through the windows until the software installation is complete (Figure 7 and 8).

BT820 Modifying VID and PID

Application Note

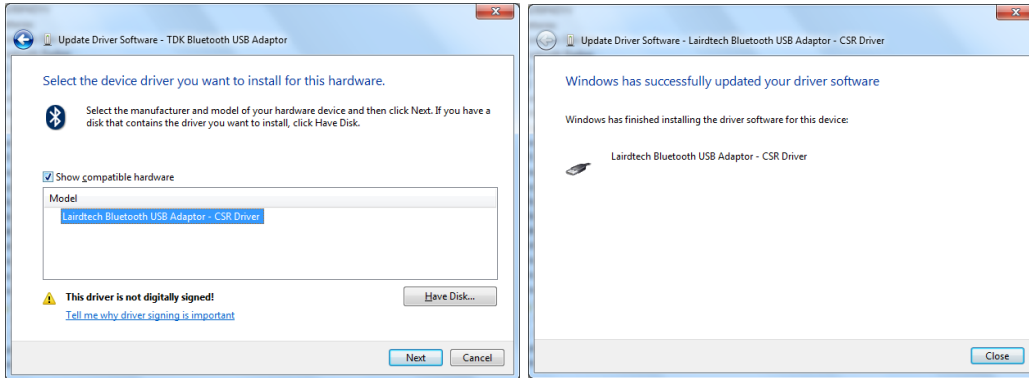


Figure 7 and Figure 8: Laird USB Driver installation

The BT820 is now recognized as Lairdtech Bluetooth USB Adaptor-CSR Driver in the Windows device manager (under Universal Serial Bus controllers).

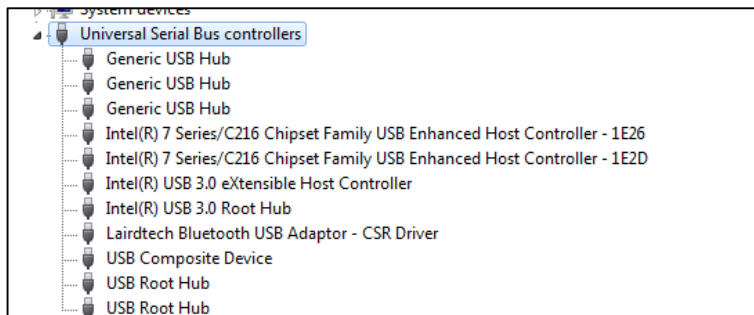


Figure 8: CSR BlueCore Bluetooth in Device Manager

Opening PStools

After invoking PStools, select **USB** from the Choose Transport window and click **OK** (Figure 9).

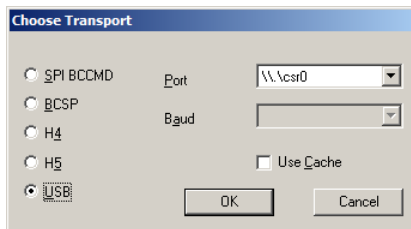


Figure 9: Selecting USB transport

PStools first reads all PSkeys from the module. After about ten seconds, the BlueCore Persistent Store window displays with Bluetooth address highlighted and the MAC address shown on the right (Figure 10).

Note: Because this address is unique, the Bluetooth address of your module will be different. Do not attempt to change it or you might put the module in nonoperational condition.

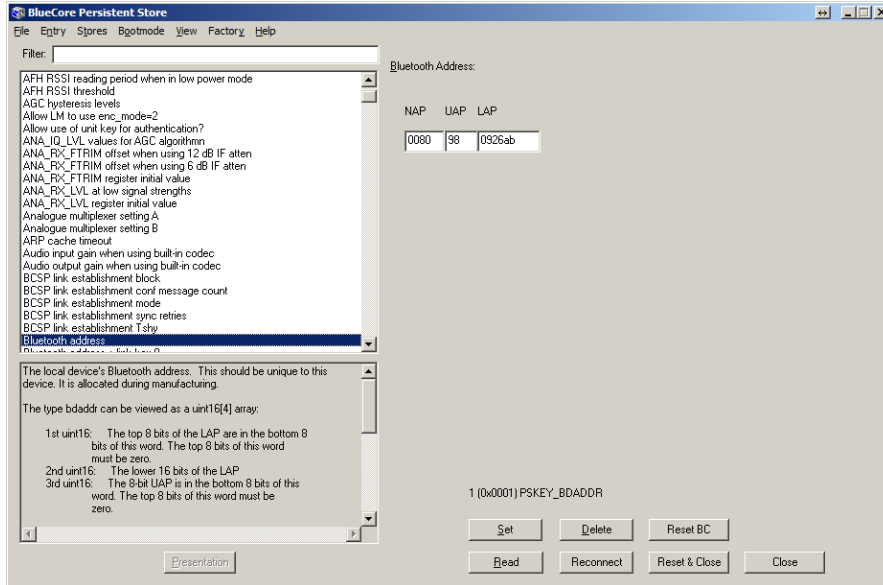


Figure 10: PStools opened successfully

Modifying the VID and PID

The VID and PID can be easily changed by merging a .psr file. To do this, follow these steps:

1. Select **File > Merge**.

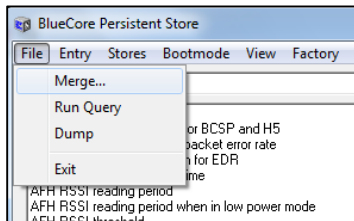


Figure 11: Select File > Merge

2. Navigate to and select the CSRVID.psr located on your computer.

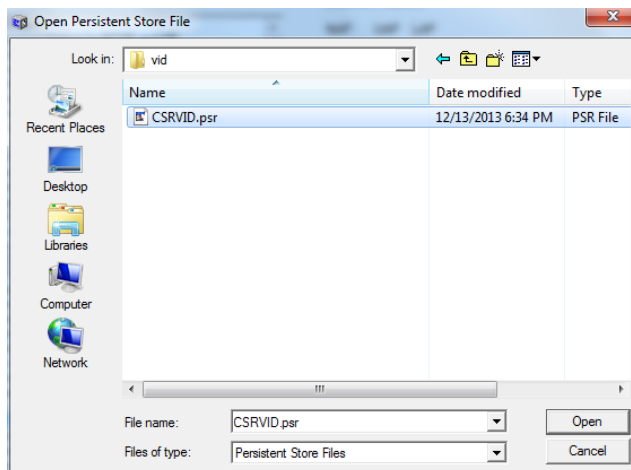


Figure 12: CSRVID.psr location

Pstools updates the pskeys accordingly.

3. Close Pstools.

Making New Settings Effective

Once the dongle is reinserted to the PC, it is recognized as Generic Bluetooth Adapter with the CSR VID and PID.

Expand Bluetooth Radios to confirm in Windows Device Manager.

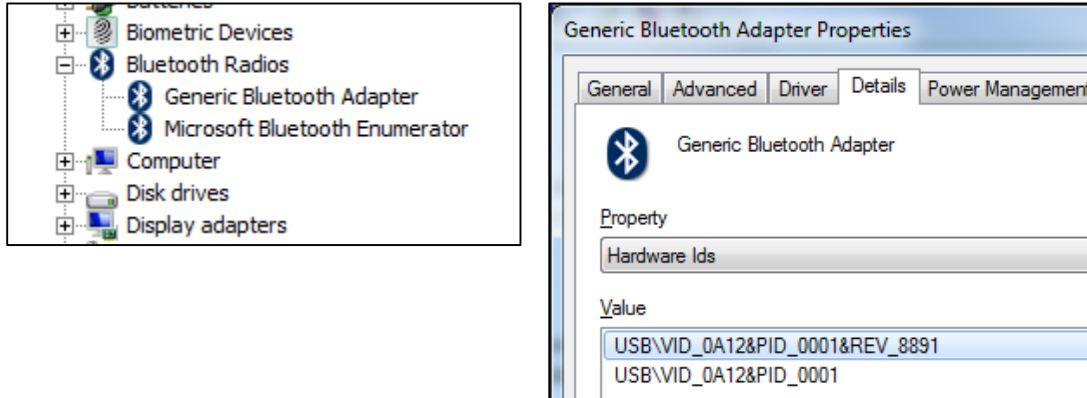


Figure 13: Accessing the Generic Bluetooth Adapter Properties

REVISION HISTORY

Revision	Date	Description	Approved By
1.0	5 Jan 2015	Initial Release	Jonathan Kaye